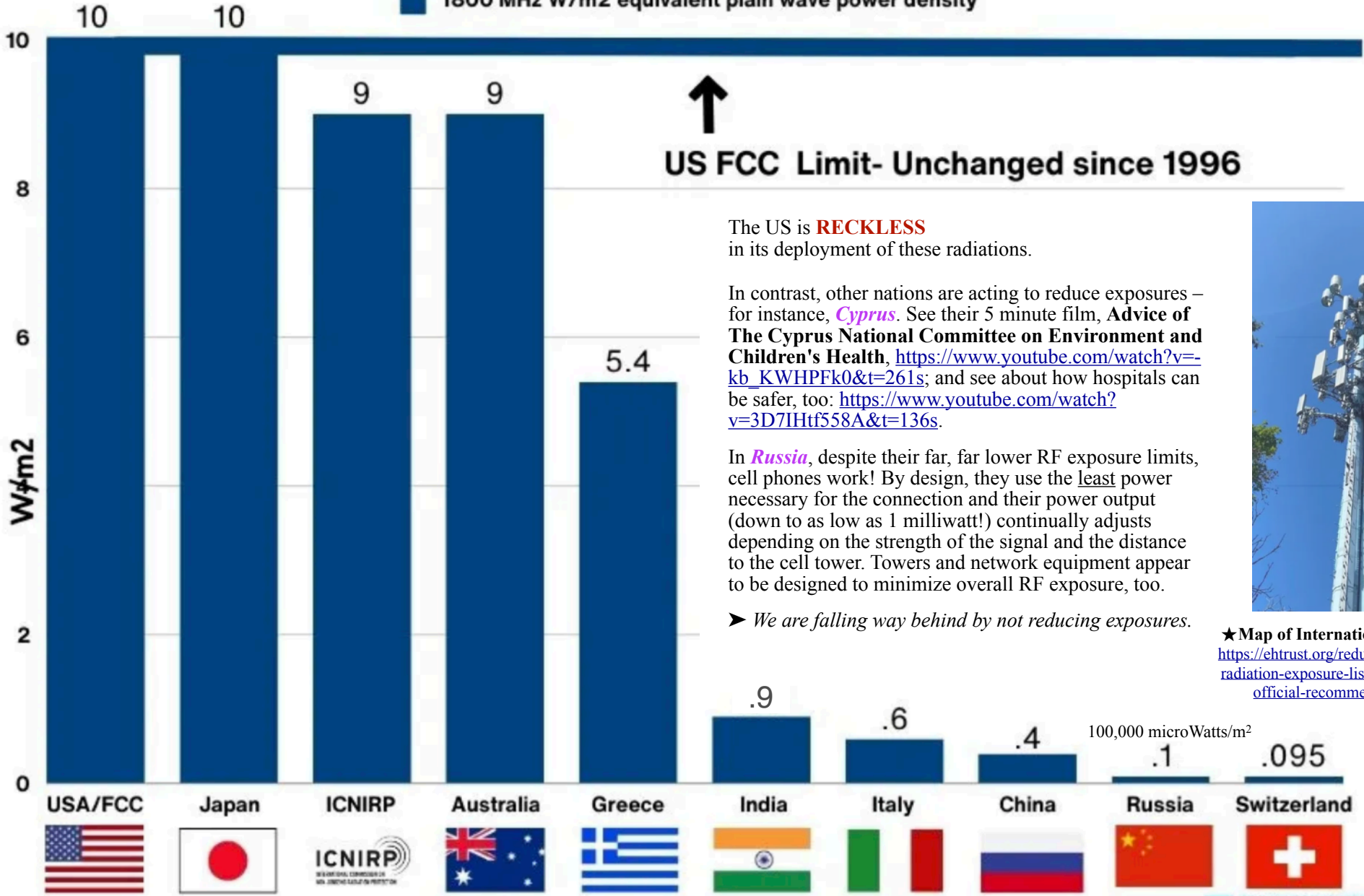


Wireless Radiation Environmental Exposure Limits (Home and School)

10,000,000 microWatts/m² (μW/m²)

■ 1800 MHz W/m² equivalent plain wave power density



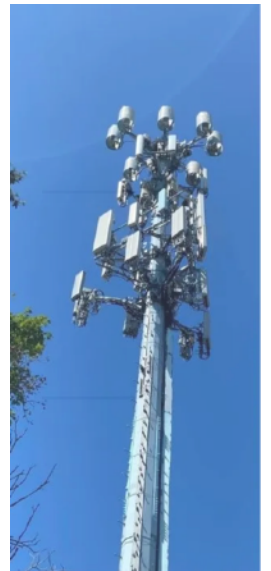
↑
US FCC Limit- Unchanged since 1996

The US is **RECKLESS** in its deployment of these radiations.

In contrast, other nations are acting to reduce exposures – for instance, *Cyprus*. See their 5 minute film, **Advice of The Cyprus National Committee on Environment and Children's Health**, https://www.youtube.com/watch?v=-kb_KWHPFk0&t=261s; and see about how hospitals can be safer, too: <https://www.youtube.com/watch?v=3D7IHtf558A&t=136s>.

In *Russia*, despite their far, far lower RF exposure limits, cell phones work! By design, they use the least power necessary for the connection and their power output (down to as low as 1 milliwatt!) continually adjusts depending on the strength of the signal and the distance to the cell tower. Towers and network equipment appear to be designed to minimize overall RF exposure, too.

➤ *We are falling way behind by not reducing exposures.*



★ **Map of International Actions:**
<https://ehtrust.org/reduce-cell-phone-radiation-exposure-list-of-countries-official-recommendations/>

100,000 microWatts/m²

See more at:
<https://ehtrust.org/policy/international-policy-actions-on-wireless/>

"International Commission on Non-Ionizing Radiation Protection"

ENVIRONMENTAL HEALTH TRUST