

# Effects of Wi-Fi Radiation on Germination and Growth of Broccoli, Pea, Red Clover and Garden Cress Seedlings: A Partial Replication Study

*Current Chemical Biology*, 2016, Vol. 10, No. 1, p. 70; Magda Havas and M. Sheena Symington

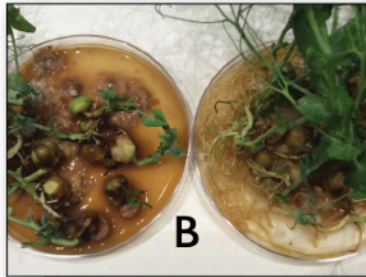
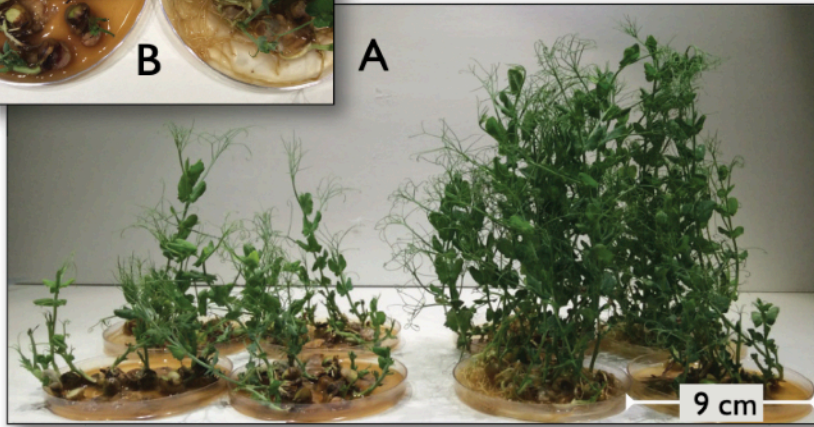


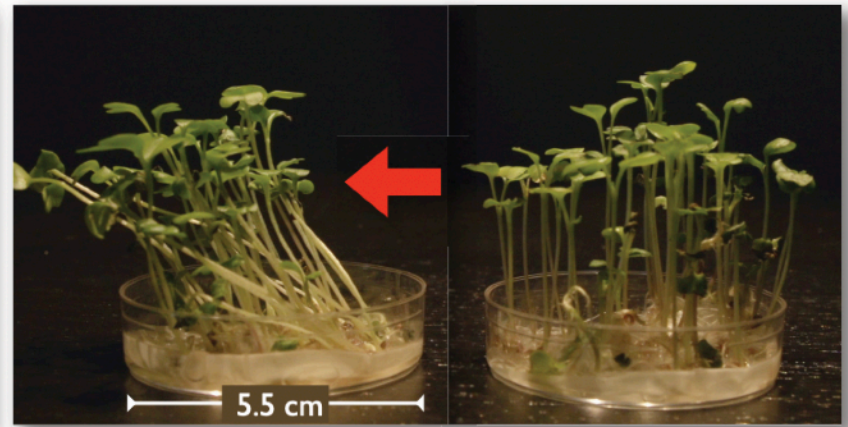
Plate 1: Pea (*Pisum sativum*)

Plate 2: Broccoli (*Brassica oleracea*)



Wi-Fi

Reference

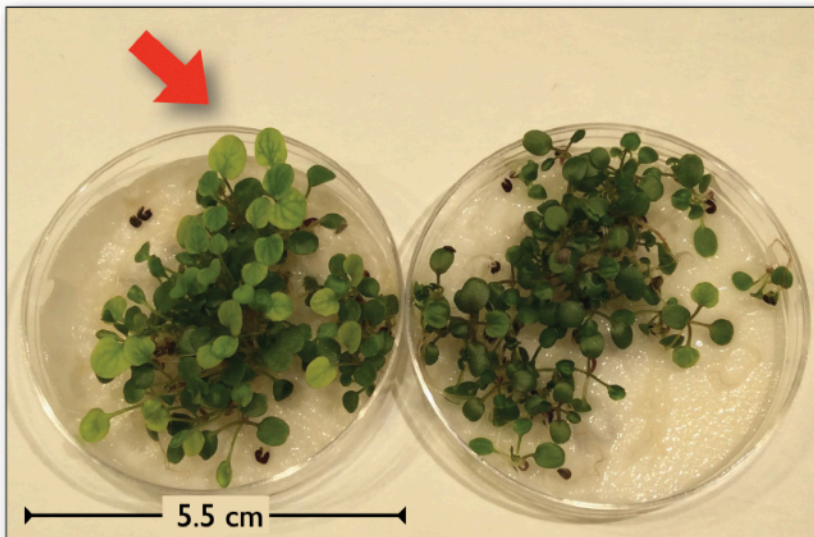


Wi-Fi

Reference

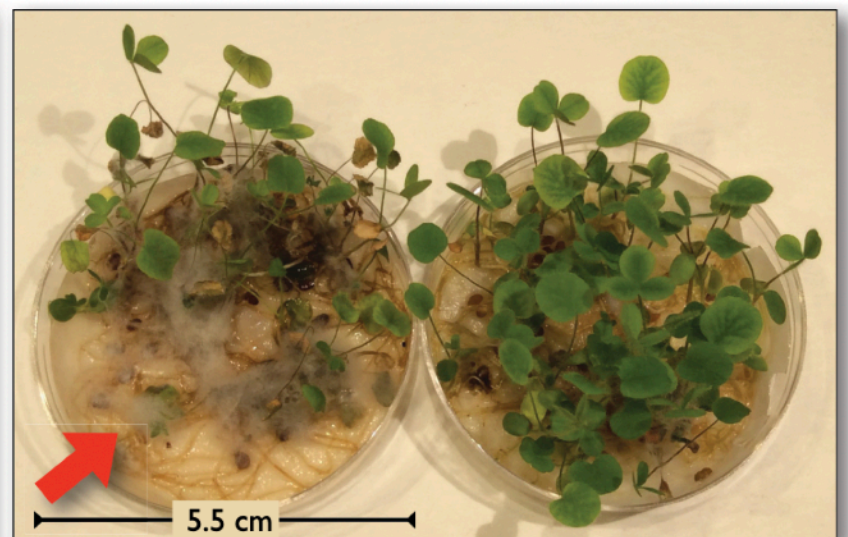
Plate 3: Garden Cress (*Lepidium sativum*)

Plate 4: Red Clover (*Trifolium pratense*)



Wi-Fi

Reference



Wi-Fi

Reference

1. Roots fail

2. Fleeing

3. Chlorosis

4. Fungus