

Smart Meter vs. Analog Meters

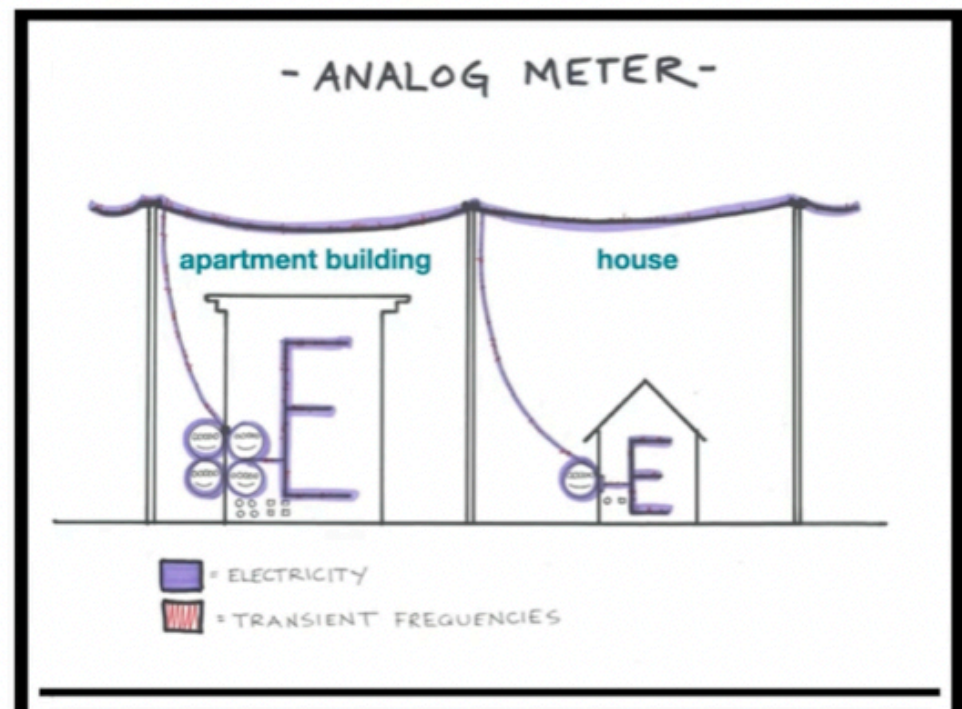
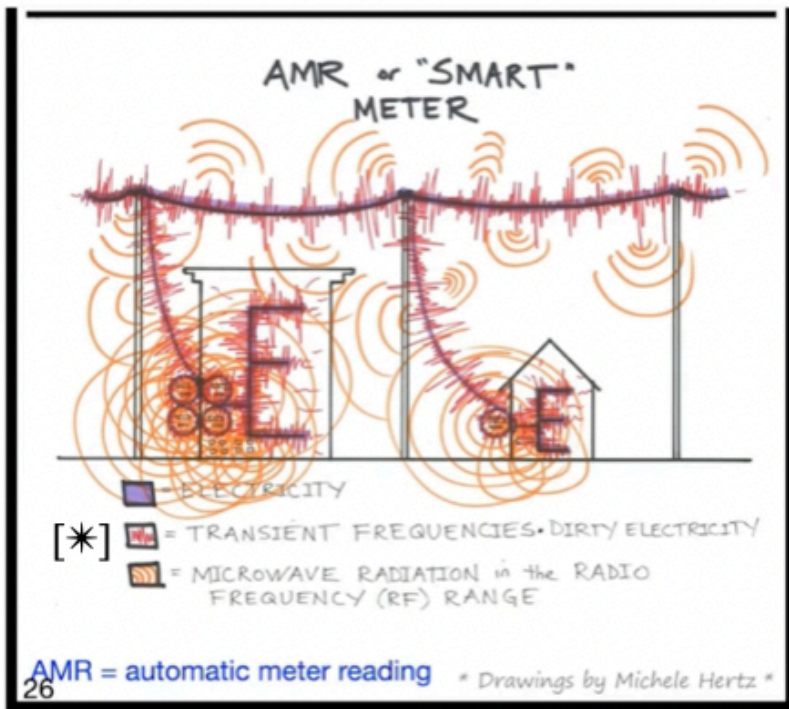


Smart meters ...

- emit **microwave radiation** (unlike analog meters)
- generate **dirty electricity** (unlike analog meters)
- talk to **smart appliances** wirelessly (increases exposure)

Also see the **studies of three schools** that were sick with Dirty Electricity: "**Lecture #4, Dirty Electricity.**"

From "**Lecture #2, Radio Frequencies, Microwaves and 5G,**" of the *EMF Medical Conference 2021*. All of the talks are online.



[Includes AMI meters (Advanced Metering Infrastructure), and all other types of smart/digital meters. See the YouTube: **Nerve Disrupting Frequencies Radiating from "Smart" Meters**, <https://www.youtube.com/watch?v=4NTSejgsjTc>.]

* [Transients arise from the constant switching between AC and DC current: Switching Mode Power Supply, SMPS. Transients are also called 'reactive' frequencies, Dirty Electricity, DE, Electromagnetic Interference, EMI.]